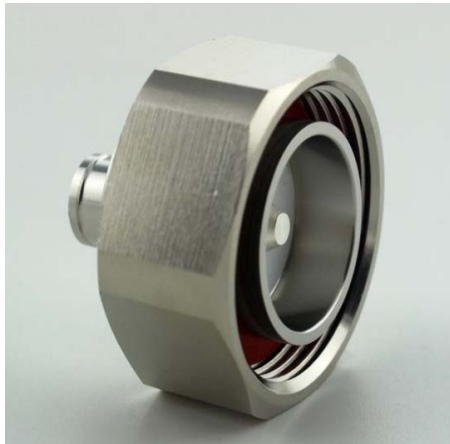


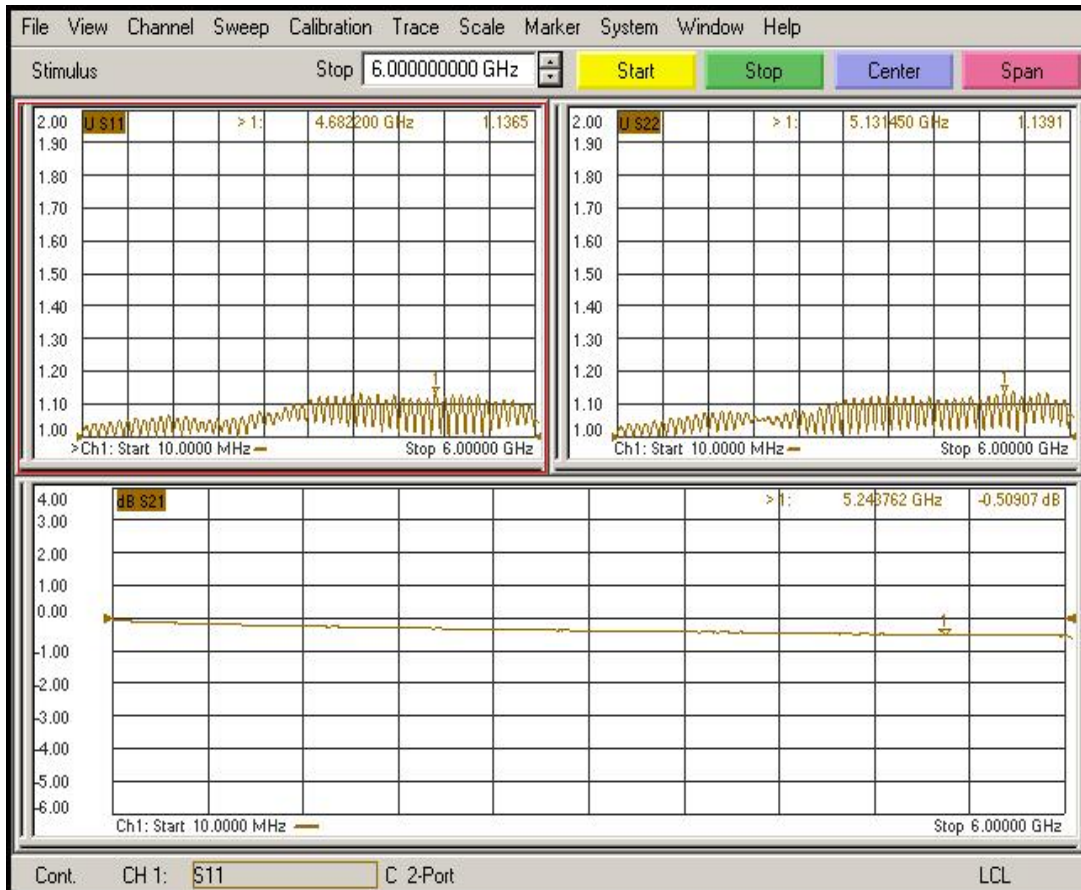
3190-6226 TC-SPO250-716M-LP



	Materials	Plating	Thickness
Body	Brass	Albaloy	3 μ m (120 μ ")
Center Pin	Brass	Silver	5 μ m (200 μ ")
Insulator	PTFE	-	-
Gasket	Silicone Rubber	-	-
Impedance	50ohm		
Frequency	DC-6GHz		
VSWR	1.25(TYP.) below 3GHz; 1.35(TYP.) @3-6GHz		
Insertion Loss	0.05x \sqrt{F} (GHz)		
3rd Intermodulation	-160dBc @2x20W		
IP Rating	IP67(mated)		
Standard	Compatible with IEC 61169-4 / DIN 47223 / CECC 22190		

Test Curve

*Based on 3 feet SPO-250 cable assembly terminated with referenced connector on each end.



PIM Test

Date: 2015/11/3



Time: 13:39

Passive IM Test Results

Description

Model Number

Serial Number

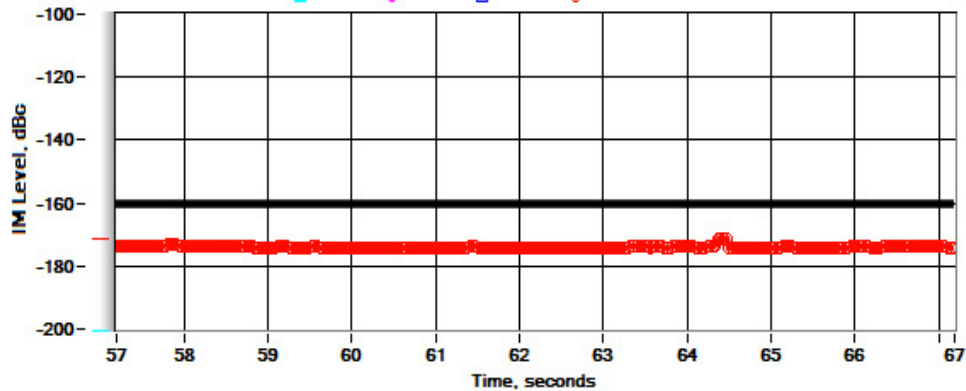
Operator

Carrier Status

ALC is on	Frequency	Measured Power	Requested Power	Offset
CARRIER 1	1805.0 MHz	42.9 dBm	43.00	0.0 dB
CARRIER 2	1880.0 MHz	43.0 dBm	43.00	0.0 dB

Passive IM Response

Order:	0	0	0	3	
Magnitude:	-999.00	-999.00	-999.00	-174.20	
Peak Magnitude:	-999.00	-999.00	-999.00	-171.00	
Frequency:	0.0	0.0	0.0	1730.0	dBc MHz



PORT 1 REVERSE IM