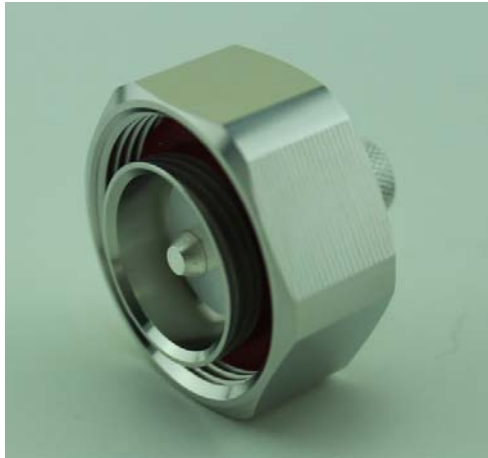


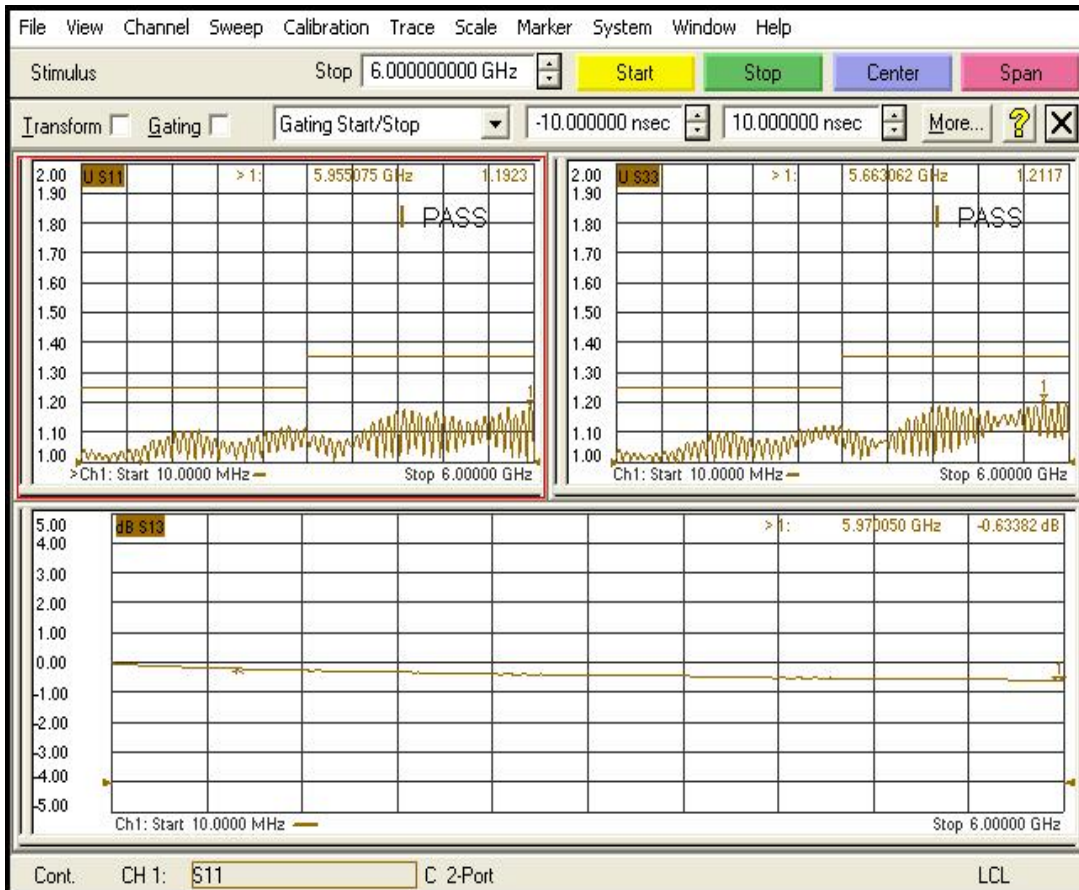
3190-2944 TC-401-716M-LP



| | Materials | Plating | Thickness |
|----------------------------|--|---------|-------------|
| Body | Brass | Albaloy | 3μm (120μ") |
| Center Pin | Brass | Silver | 5μm (200μ") |
| Insulator | PTFE | - | - |
| Gasket | Silicone Rubber | - | - |
| Impedance | 50ohm | | |
| Frequency | DC-6GHz | | |
| VSWR | 1.25(TYP.) below 3GHz; 1.35(TYP.) @3-6GHz | | |
| Insertion Loss | 0.05x√F(GHz) | | |
| 3rd Intermodulation | -160dBc @2x20W | | |
| IP Rating | IP67(mated) | | |
| Standard | Compatible with IEC 61169-4 / DIN 47223 / CECC 22190 | | |

Test Curve

*Based on 3 feet TFT-401 cable assembly terminated with referenced connector on each end.



PIM Test

Date: 2017/10/18



Time: 16:28

Passive IM Test Results

Description

Model Number

TFT401DMDM1.00M

Serial Number

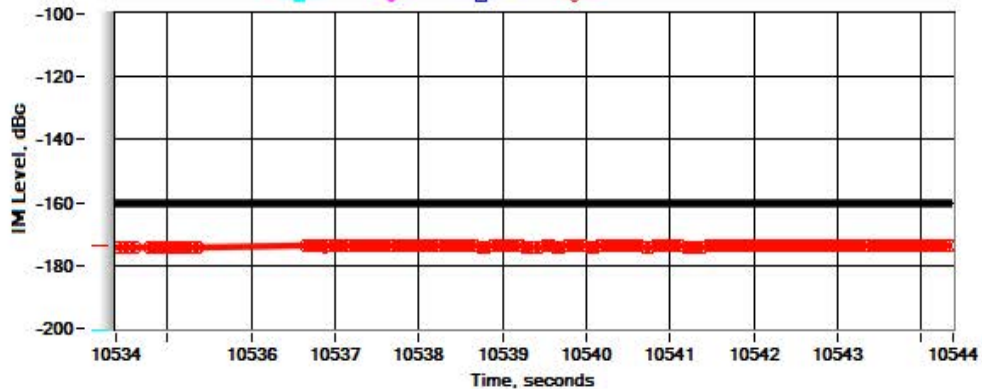
Operator

Carrier Status

| A/C is on | Frequency | Measured Power | Requested Power | Offset |
|-----------|------------|----------------|-----------------|--------|
| CARRIER 1 | 1805.0 MHz | 43.0 dBm | 43.00 | 0.0 dB |
| CARRIER 2 | 1880.0 MHz | 42.9 dBm | 43.00 | 0.0 dB |

Passive IM Response

| | | | | | |
|-----------------|---------|---------|---------|---------|------------|
| Order: | 0 | 0 | 0 | 3 | |
| Magnitude: | -999.00 | -999.00 | -999.00 | -173.97 | |
| Peak Magnitude: | -999.00 | -999.00 | -999.00 | -174.00 | |
| Frequency: | 0.0 | 0.0 | 0.0 | 1730.0 | dBc MHz |



PORT 1 REVERSE IM