

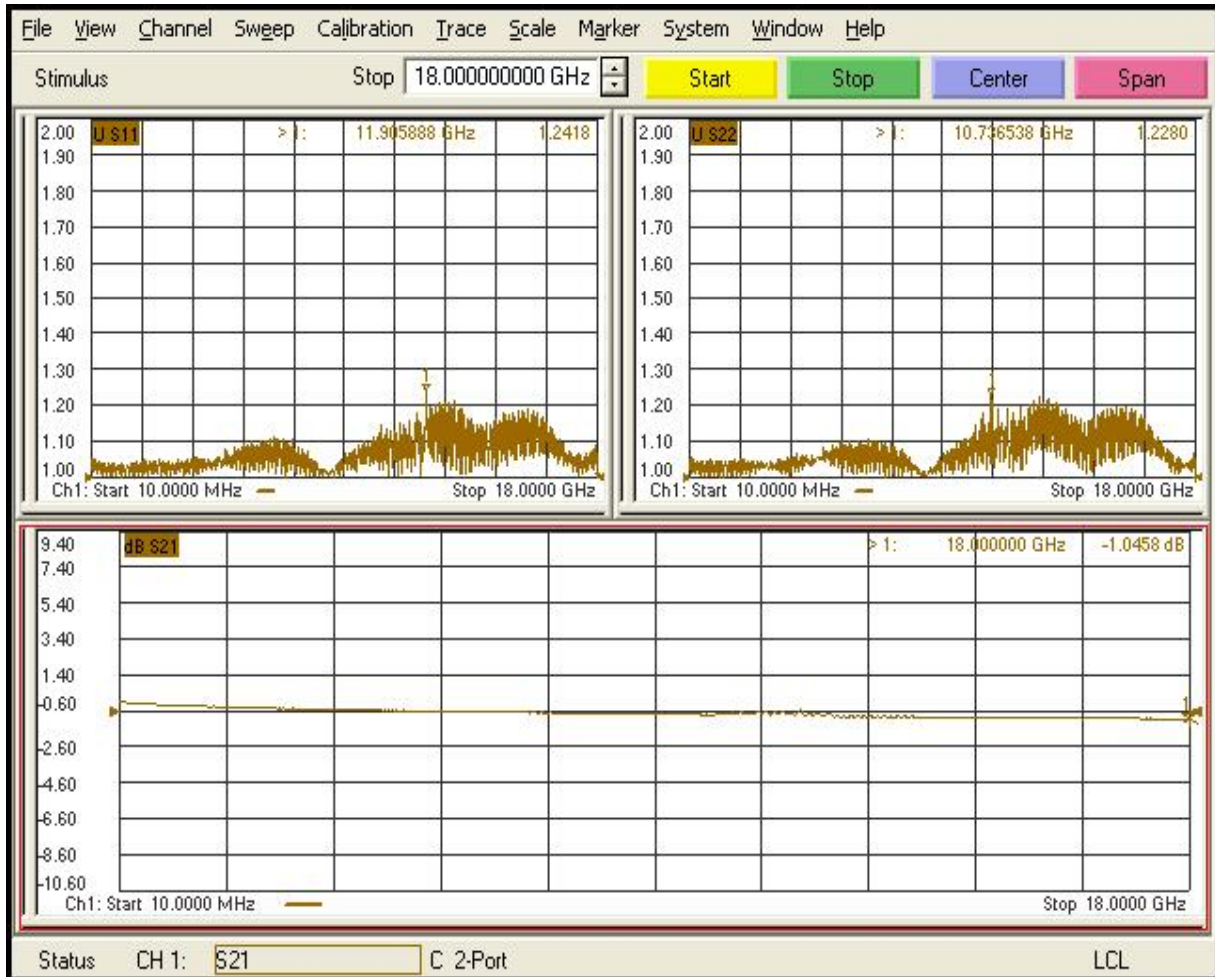


	Materials	Plating	Thickness
Body/Shell	Stainless Steel	Passivation	-
Center Pin	Be-Cu C17300	Gold	50μ" min.
Insulator	Teflon	-	-
Gasket	Silicon Rubber	red	-
Barrel	Stainless Steel	Passivation	-
Retaining Ring	Stainless Steel		

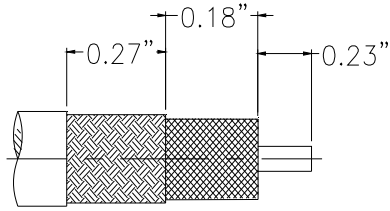
Impedance	50ohm
Frequency	DC-18GHz
VSWR	1.25 Max
IL	0.05x√F(GHz)
3rd Intermodulati	-

Test Curve

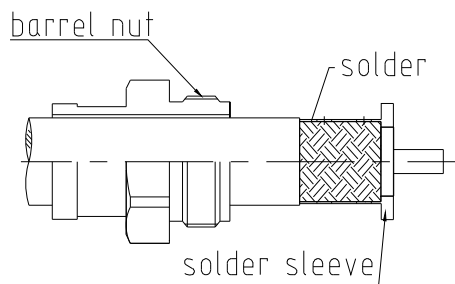
*Based on 1M SFT-304 with two SMA straight male connectors on each end.



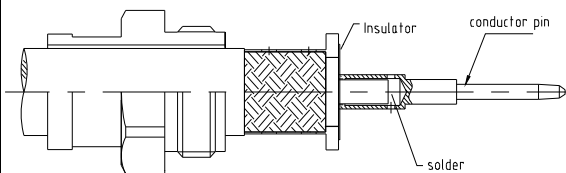
Installation Instruction



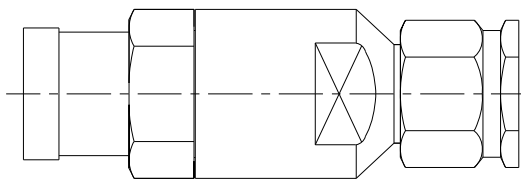
- 1 A. Trim cable to dimensions shown. Be careful to avoid nicking the braid
 B. Remove interlayer



- 2 A. Slide barrel nut and the solder sleeve over cable
 B. Seat the barrel to the cable and solder cable
 C. Remove any residual plastic from center conductor



- 3 A. Seat the smaller insulator to the cable before solder the conductor pin.



- 4 A. insert cable into connector body until tighten the barrel nut was done assembly